

# Best Practices in Opening Recreation Facilities and Programs

Michelle Lacy,  
*General Manager, Pleasant Hill RPD*

Patrick Larkin  
*General Manager, Cordova RPD*



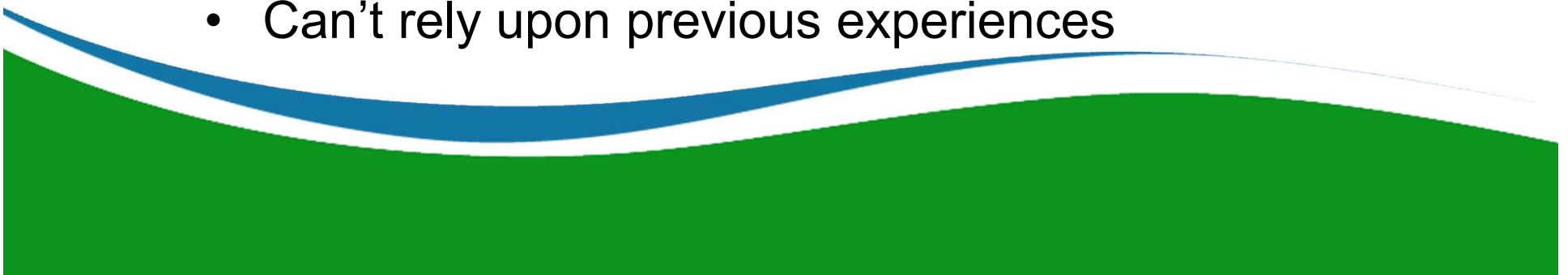
# Responsibilities in COVID-19 Health Emergency

- Provide safe work environment for employees
- Protecting vulnerable populations
- Provide essential services
- Educate public in best practices in reducing community transmission
- Enforce local health orders
- Identify best practices to safely open parks, facilities and activities
- Evaluate each program, activity, event, task to identify if it can be safely implemented under current local health orders
- Mitigation measures to maintain states of low to no community transmission



# Challenges in Opening

- Changing Health Orders
- Non-health Related Pressures
- Use of public spaces in non-traditional ways
- Safety of employees
- Not involved in opening decisions in local Health Orders
- Can't rely upon previous experiences



# Questions to Ask

- What activities and facilities do the current Health Orders allow?
  - State of California
  - County



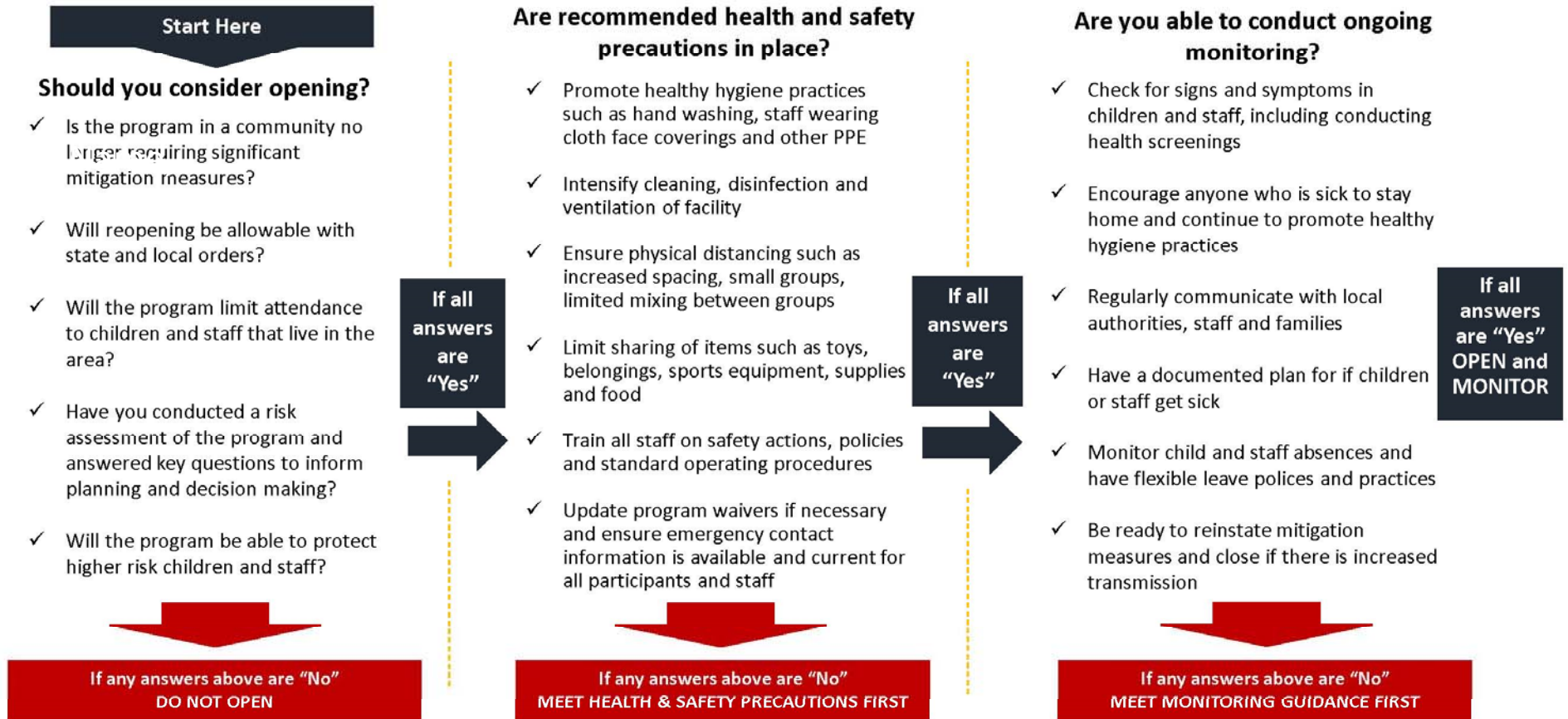
# Questions to Ask

- What are others in industry doing?
  - Neighboring Districts/Cities
  - National Park and Recreation Association



# Summer Camp Reopening Decision Tool

The purpose of this tool is to assist park and recreation professionals in making decisions regarding **youth programs and summer camps** during the COVID-19 pandemic. It is important to adhere to all state and local guidance from health officials and others to determine the most appropriate actions.



\*Tool based on draft CDC guidance

# Questions to Ask

- What liability do you have with opening?
  - Parks or Outdoor Facilities?
  - Programs?
    - Differences with type, age group
  - Employees?



# Questions to Ask

- Are opening plans sustainable?
  - Financially?
    - Cost benefit analysis
  - Staff Resources?
  - Cleaning protocols?






# Questions to Ask

- What protocols do you need to address in reopening plan?
  - Not one size fits all approach
  - Standard Operating Procedures for each group of facilities and programs



# Protocols to Consider

- **Adherence Management-** identify responsible parties for ensuring adherence and monitoring for all activities and facilities
  - **Social Distancing-** identify steps for ensuring appropriate social distancing for activity
  - **Face Coverings-** identify appropriate use of face covering for activity level and age of participant
  - **Sanitization-** identify frequency and surface sanitization schedule
  - **Facility Changes-** identify physical changes to limit interaction of non-cohort groups
  - **Contact Tracing-** identify level of contact information required and availability for ease of use by Health Services
  - **Wellness Checks-** identify protocol for assessing wellness of staff and participants
  - **Signage-** identify necessary signage regarding protocols and safety measures including appropriate locations for posting. Includes but not limited to standing areas, barriers, rules, safety protocols
  - **Equipment-** identify use of equipment including sanitizing requirements if appropriate
- 

# Questions to Ask

- How do you communicate protocols and procedures?
  - Written Procedures
  - Signage
  - Staff Training



# DOG PARKS

CITY OF  
**ROSEVILLE**  
CALIFORNIA

COVID-19 UPDATE

## YES



**Plan ahead** before you leave home to bring hand sanitizer, water and waste bags. Face coverings are recommended.



**Wash your hands** for 20 seconds after returning home and following the handling of animals, their food, waste or supplies.



Maintain a minimum of six feet of **physical distancing** with people not in your household.



**Clean up** after pets properly and practice good pet hygiene.

## NO



**Minimize or refrain from touching** items with your bare hand such as gates and fences. Use hand sanitizer following touching.



**Do not sit** on or touch any benches or chairs.

The above items are a combination of requirement of the revised Placer County Health Order issued on April 16, 2020 and best practices recommendations from the CDC.



*Let's work together to keep our community safe. Together we can help #flattenthecurve.*



# Share Your Experiences

- Southern California Counties
- Central California Counties
- Bay Area Counties
- Northern California Counties

